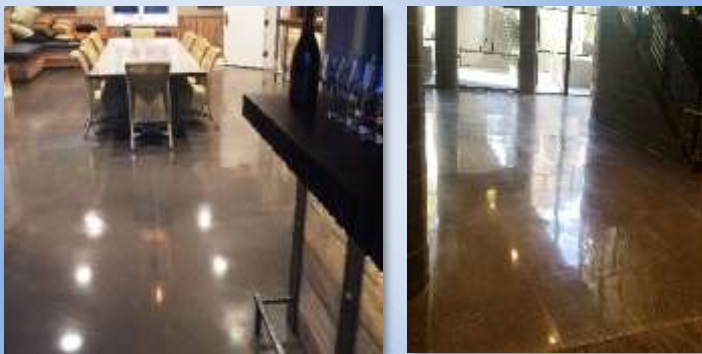


# Grind&Polish System

Today diamond polishing is now the most trendy and desired finish on commercial and residential floors. This process consists of grinding and refining a concrete surface with progressively finer diamond grit, until it becomes smooth and reflective. At the same time, the concrete surface also becomes harder and tighter, making it into the most durable and easy to maintain flooring on the market.

Since 2010 DelGrosso Design is a **Superabrasive** (TM) certified floor preparation and polishing contractor. We are licensed (CSLB 864095) and insured. All our equipment is designed for industrial polishing and we use only Made in USA and EU high quality diamond tooling. **DelGrosso Design is a Sonoma County owned and family-run business with a proven reputation of high quality, integrity, and reliability.** All our work is performed with knowledge and with the goal to exceed the client's expectations.



## Advantages of diamond polished concrete

- ❖ Extremely durable surface
- ❖ Scratch resistant
- ❖ Very low maintenance
- ❖ Dustproof, easy to clean surface
- ❖ Can be done to most existing concrete
- ❖ Highly attractive and completely customized look
- ❖ High reflectivity of surface saves 40% on lighting bills

## What can we polish?

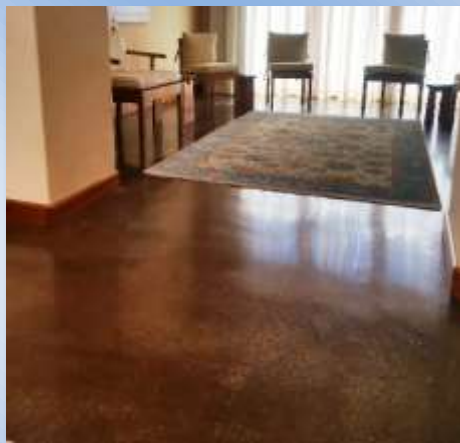
Showrooms, Manufacturing plants, Warehouses facilities, Retail stores, Shopping centers, Offices, Wine tasting rooms, Garages and Gyms, Department stores, Groceries stores, Schools and Hospitals, Healthcare facilities, Restaurants, Hotels, Storage



# Residential Grind&Polish

Everyday more homeowners are switching to a diamond polished finish for their concrete floors. Either on a new topping slab or on an old structural slab, the polished finish has a unique character. Our diamond polishing process merges the old-fashioned warmth and the modern technical progress into an unmatched result.

Besides durability and ease of cleaning, another advantage of polished concrete is the complete customization in sheen and color. Extreme and unique decorative features, such as stenciled graphics, borders and marbling color effects can be applied on new and restored floors. On each project, we'll work with our clients to determine the perfect features, customizing the process to meet their needs. Our goal is to exceed our client's expectations and make a floor that we can be proud of and they will want to show off to friends.



**Polished coatings and Self-leveling coatings** – Whenever the structural conditions of the existing floor slab are not suitable for a direct polishing, a new layer of engineered cement can be applied to the surface and then ground and diamond polished. This process is a multi-phase installation that allows for total customization (glass chips, integral colors, metallic inlays...) and creates an incredibly attractive and durable floor.

