



CSLB 864095

Products and Services Catalog

DelGrosso Design

Custom Concrete & Restoration

Interior Floors:

- **Diamond Polished Floors**
- **Diamond Polished Cement Toppings**
- **Grind&Polish System**
- **Custom Staining and Dyeing**
- **Stenciling**

Outdoor Concrete:

- **Outdoor Grind&Polish Restoration System**
- **Stain&Seal & Custom Coloring**

www.delgrossodesign.com

Our Company

HISTORY - The Company was founded in California in 2002 by Andy DelGrosso after more than 10 years of being in business in Northern Italy (Lake Como), where he was born and raised. Andrea's (Andy's birth name, like Bocelli, the Italian opera singer) construction background goes back to when he was 16 and, following the footsteps of his grandfather and his dad, started building with stone and concrete. Over the years he developed his own artistic talent, as well as a strong sense of business. In 2002 he moved to San Francisco Bay and he established his company in Santa Rosa, where he resides with his family.

OUR WORK - All our work is hand-made with passion and superior mastery. Going through our website and pictures' gallery you will see how unique our projects are. They are always developed with and for our clients, in this way achieving a complete customer satisfaction. Our Unique designing style is rich with Italian and Mediterranean touches. In the last years Andrea and his wife Christine led the family owned business toward a more specialized residential clientele, where the unique designing and coloring styles can be more appreciated. Since 2008 we are also serving commercial clients, from retail stores to warehouses, including industrial spaces.

OUR COMMITMENT - Our philosophy is to continually grow the company performing excellent and unique work and offering a superior customer service. Our dedication to our customers shows in the details of every project. Our goal is to always exceed our clients' expectations. Our values of honesty, reliability, great performance and clean look, makes of our company "one of a kind". All our employees are trained and insured through the State Fund Workers' Compensation. Over the years we have built a solid reputation based on all these facts.

OUR LOCATION – DelGrosso Design is located in Santa Rosa's Valley of the Moon, in the heart of the wine country. We mostly operate in Sonoma, Marin and Napa counties and in the City of San Francisco. Because of the unicity and quality of our services we are often requested outside our territory (East Bay, South Bay, Coastal areas of Sonoma and Mendocino Counties, Lake County). Feel free to inquire with us for projects in these areas, we evaluate each individual project and will supply a preliminary estimate by email. A Project Information Form is available at our website "Contact" page.

Contact:

Andy DelGrosso (owner, estimator)

Cell 707 – 318 – 2705

Off 707 – 537 – 8752

e-Fax 320 – 451 – 3842

email: info@delgrossodesign.com

CSLB 864095

Diamond Polished Cement Toppings

These are among the most beautiful, innovative and durable floors available on the market. Unlike commercial grade epoxy terrazzo, our floors are made with an extremely high quality cement matrix and do not require use of aggregate. The result is a stunning floor with the feel and durability of diamond polished concrete and an unmatched mirror reflectivity. Colors can be completely customized by using integral pigments and color dyes. Because of its look and durability, this high-end floor is now widely sought after on residential and commercial settings.



Stenciling – Your floor can be further customized by adding a logo or custom wording. The graphics are hand-made on the floor by using color dyes and vinyl masking stencils which we manufacture from a high-definition PDF file provided by client. We can also create unique designs using scored lines and engraved patterns.

Aggregate – Unlike the classic commercial grade terrazzo, our floor does not require the use of stone aggregate. Nevertheless, it is possible to add colored glass, reflective glass, quartz or marble chips within the cement matrix and create unique and stunning effects.

Durability – The durability of our diamond polished cement toppings is **extreme**. Our diamond polished surfaces are the most resilient and easy to maintain on the market and in time performs much better than any epoxy or industrial coating. We recommend periodic maintenance to keep the floor in tip top shape for decades to come. Inquire with DelGrosso Design for the recommended maintenance schedule.

The process – Once the existing structural concrete slab has been properly repaired and prepared by grinding or shot-blasting, an epoxy "bond" layer with sand to refusal is applied, zinc or brass divider are installed, then a ½" layer of high strength engineered cement is installed. Once the cement sets, it is diamond refinished and polished to a mirror reflective look. A lower sheen is also possible, whenever requested.

Color selection – **Ameripolish** makes a line of integral pigments (**OS System**) and penetrating dyes (**Surelock Dyes**) especially formulated for TRU self-leveling cement pigmentation. With a combination of this two coloring products it is possible to completely customize the look of your floor.



Grind&Polish System

Today polishing is becoming the most requested finish on commercial floors. This operation consists of grinding and refining a concrete surface with progressively finer diamond grit. The diamonds are contained in special "polishing discs" and are embedded into a metallic, ceramic or resin matrix. During the polishing operation the concrete surface becomes harder and tighter, creating the most durable finish available on concrete, in excess of 10,000 PSI.

Since 2010 DelGrosso Design is a **Superabrasive** (TM) certified floor preparation and polishing contractor. We are licensed (CSLB 864095) and insured. All our equipment is designed for industrial polishing and we use only Made in USA and EU high quality diamonds. **DelGrosso Design is a local family owned and run business with a proven reputation of high quality, honesty and reliability.** All our work is performed with knowledge and professionalism for a long lasting customer satisfaction.



Advantages of diamond polished concrete

- ❖ Extremely durable surface
- ❖ Scratch resistant
- ❖ Very low maintenance
- ❖ Dustproof, easy to clean surface
- ❖ Can be done to most existing concrete
- ❖ Highly attractive and completely customized look
- ❖ High reflectivity of surface saves 40% on lighting bills



What can we polish?

Manufacturing plants, Warehouses facilities, Retail stores, Shopping centers, Offices, Automotive shops, Showrooms, Garages and Gyms, Department stores, Groceries stores, Schools and hospitals, Healthcare facilities, Restaurants, Hotels, Storage facilities.



Residential Grind&Polish

Everyday more homeowners are switching to a polished finish for their concrete floors. Either on a new topping slab or on an old structural slab, the polished finish has a unique character. Our diamond polishing process merges the old fashioned warmth and the modern technical progress into an unmatched result.

Besides durability and ease of cleaning, another advantage of polished concrete is the complete customization in sheen and color. Extreme decorative features like stenciled designs, borders and color effects can be added during the polishing phase. On each project we'll work with the owners to determine the wanted color and sheen, the amount of detailing required, define and customize the process to meet the owner's needs. Our goal is to exceed the client's expectations and make a floor that we can be proud off and the owner wants to show off.



Polished coatings and Self-leveling coatings – Whenever the structural conditions of the existing floor slab are not suitable for a direct polishing (also called “**Grind&Polish**”), an especially engineered high strength cement coating can be applied to the surface and then polished. This process requires a few additional preparation and refinishing steps, but creates an incredibly attractive and durable floor.



Self-Leveling Cement Toppings

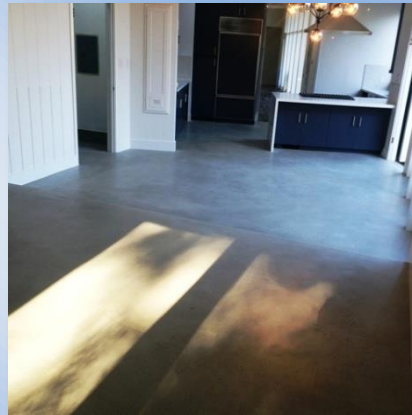
Our self-leveling cement floors are built with CTS Rapidset TRU self-leveling grout applied in ¼" thick layer. This cement grout is rated with the highest compression strength of any resurfacing product on the market (5000 PSI in 24 hours, 6500 PSI in 28 days).

Our self-leveling cement floors are installed over a structurally stable concrete slab. When a plywood subfloor exists, ½" backer board needs to be installed for proper bonding and performance, and proper control joints design is required. Whenever necessary It is possible to build up to a maximum of 2" by installing a cement underlayment.

All our interior floors include installation of protective water based clear sealer (Ameripolish Stain Protector 3D). Upon request our self-leveling floors can be stained/dyed for a completely customized look.

Sanding, coloring and staining

– Once the cement sets, we run a light-weight floor sander equipped with diamond pads to smooth out the few trowel marks left by the placement tools. This operation creates the unique burnished look of our cement floors. The TRU self leveling cement has a beautiful natural off/white "creamy" color. We can customize the color using integral pigments, color dyes and stains, also stone and colored glass aggregate.



Stain & Seal

On indoor and Outdoor Concrete

Staining a concrete slab is one of the most cost effective ways to improve its appearance, also to create a peculiar look, a marbled finish and antiquing effects. It is misconception that concrete stains can be used to cheaply restore damaged, worn or defective concrete. When the concrete surface is sealed, painted, discolored, worn out, structurally weak, contaminated or has glue on it, the staining alone will not be a suitable mean of restoration. Additional operations are in this case necessary prior to staining, like grinding or resurfacing the slab

Stains - Concrete stains are semi-transparent pigments, when applied to the surface will penetrate into the concrete through the pores adding a tint. They will not cover existing defects or discolorations. Some acrylic based stains can be applied in multiple thin layers to cover the entire surface, but are not as durable when subject to wear. Acid stains are chemically reactive stains based on an older and more economical technology. **Ameripolish Color Juice and Surelock Dyes** are our preferred coloring products because of the high performance, variety of available tones and the flexibility of use in different situations.



Color selection – Most manufactures supply a color chart for their lines of products. The color chart should be used to select the “pigment”, but not as a representation of the final concrete look, tone or appearance. Many factor such as existing color in the concrete, color of the aggregate, composition of the slab, layout, temperature and other factors will contribute to achieving every time a unique coloration, often different from what seen in the color charts. It is highly recommended, whenever possible to apply the stain (or multiple stains combination, also called “formula”) in a sampling area.

Sealer – Stained/dyed concrete must be sealed for surface protection. The sealer requires to be reapplied before excessive wear exposes the color and concrete to corrosion, soiling, contamination and accidental staining. Ameripolish Stain Protector 3D and Prosoo Polish Guard are our products of choice.



Outdoor Grind&Polish

with **Color Juice** application

This restoration process on outdoor concrete will produce a look very similar to interior diamond polished floors. Most times on outdoor projects the final sheen would be lower than a typical interior diamond polished surface, but the process, as well as the equipment used, would be in many parts similar on both settings.

The process

Grinding – This operation will level the high spots on the slab removing the top layer of sealants, cement, color dye, paint, epoxy, stains and dirt previously penetrated into the surface. As we say in the trade, will “cut” the surface to prepare the concrete for color dye or stain application and sealer application. The grinding is done with specifically designed planetary floor grinders. These grinders are electric or propane powered walk-behind machines on which are mounted diamond encrusted metallic buttons, called “**metal bond diamond buttons**”. Most grinding is performed with 30 grit buttons. The grinding is often a very slow process and can easily take days even for smaller size projects. After the concrete is grinded, the grinding marks (swirl marks) will be removed with 70 and 120 grit diamond buttons. The grinding process will expose the stone aggregate contained just below the surface. Sometimes also exposes defects contained into the slab, so a certain amount of repair work is normally needed on most outdoor concrete slabs.

Staining – Once the surface is prepared and cleaned, a color stain can be added to create a completely customized look. Although other products are available on the market, our coloring system of choice is Ameripolish Color Juice. The formulation of these high quality stains and pigments, in conjunction with highly skilled craftsmanship, will produce extremely beautiful and durable results. Most often we prepare on-site mock-ups and samples to properly preview the final look. Color Juice stains are UV stable and will not fade or yellow with time.



Sealer – Our sealer of choice is Ameripolish X Link WB (water based, VOC compliant penetrating sealer). This penetrating product will plug the concrete pores rather than making a thick plastic film over the concrete, like other sealers do. As the manufacturer explains, the sealer will create “**a window of opportunity that allows cleaning of spills**”. In certain situations, when the concrete is ground to a very smooth finish, this sealer would allow high-speed burnishing. This operation increases the sheen and strength of the sealer.



Diamond tooling –

The quality of the diamond tools (metal bond buttons, resin and ceramic bond pads, brazed pads, buffing pads) and of the grinding/polishing machines is very important. Our *Superabrasives* diamond tooling and equipment is engineered to perform at the highest levels in many type of situations, from commercial to residential, indoor and outdoor settings. Our Ermator Dust Control units are OSHA compliant and abate the majority of the airborne dust, making the work environment safe for the crew and for anyone on the premises.

Personnel – Some operations during a grinding and polishing project are repetitive and slow. Many phases, though, are critical and should be performed only by trained personnel. Each project will offer a generous dose of unforeseen and challenges, no matter how straight-forward it seems to be initially. Our crew is highly trained and able to make decisions on the spot whenever necessary.

Score Lines – One of the biggest advantages of this restoration process is that allows for repair of cracked concrete better than any other restoration system. In old concrete cracks are often acting as control joints. By incorporating the cracks repair into a beautiful score lines design we allow the functionality to remain, while properly addressing the aesthetical side.

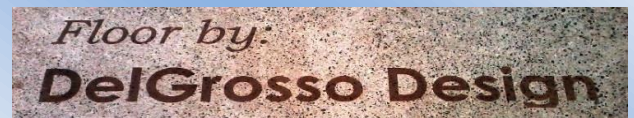
Maintenance – Our Outdoor Grind&Polish concrete is beautiful and very durable. Periodic re-application of X Link WB sealer is recommended in most situations to maintain the concrete protected and keep it performing at best. This operation is very cost effective, quick and simple. The resealed concrete can be open to traffic in as little as 1 hour. The reseal operation should be performed more often in high traffic settings or when pressure washing is performed multiple times a year.

Expansion joints – Old outdoor concrete slabs often have wooden expansion joints embedded in it. Most times the wood boards, often 2x4 lumber, are in bad conditions and need to be removed. The voids left are then backfilled with concrete or other engineered cement products. Sometimes the layout and design of the wooden control joints makes more difficult achieving good aesthetical results, and can affect the final look.

Stenciling with Color Dyes

One of the most captivating features of polished concrete is the option of using color dyes to create art work directly on the concrete surface. The floor is used as a canvas where incredibly articulated art work can be imprinted. The process is conceptually simple, but the actual installation can be challenging and requires experience. What we call stenciling is an art involving both modern technology and artisan craftsmanship, once again creating a unique result on every project.

The masking stencil – Once the floor slab has been properly prepared (diamond grinded and honed), vinyl stencils are applied to the floor in layers. The stencils are made with especially manufactured vinyl sheeting which sticks to the polished floor and can be peeled without leaving glue residue. These stencils are manufactured from a high definition PDF file provided by the client. The wanted design then is broken down in “layers” by our designing techs (in a process similar to screen printing) and sent out for manufacturing. Unlike other type on the market, our stencils are only temporarily masking applied to the floor in order to allow the coloring. Once the dye dries, the stencil is removed and a new layer is applied for a different color.



Color dyes – Our preferred dye system for stenciling is Ameripolish Classic Dyes. These concentrated dyes come in many vibrant tones and are engineered for stenciling on diamond polished surfaces and permanently bond to the concrete. Once the color dyes are applied, the masking stencil layer is removed and the process repeats for each needed color layer. Now the dye is permanently blocked into the concrete and can be removed only by grinding. The polishing process is then completed, including the application of sealer, buffing and burnishing.

Durability – Our stenciling process is extremely durable, just like our diamond polished floors. A minimal amount of maintenance is required over the years to keep it spiffy and sharp as the first day. On slabs with a high moisture content the pigment overtime may be drawn deep into the slab, causing some fading. This situation can be recognized by the fact that the surface will maintain the sheen just like the rest of the floor but the dye intensity will diminish. This is a rare situation that can be corrected by application of additional dye.

Diamond Polishing Guidelines

Most bids for commercial and residential polished concrete flooring projects are based on architectural, aesthetic or diamond tooling manufacturer specifications, not on the ASTM Standard. Since October 2013 an ASTM standard for floor diamond refinishing has been implemented by CSDA (CSDA-ST-115 Measuring concrete micro surface texture). These following guidelines integrate the ASTM guidelines with the classic surface preparation and refinishing system.

DelGrosso Design is a Certified Superabrasives Floor preparation and polishing contractor. Superabrasives (www.superabrasives.us) is the leading manufacturer of polishing equipment and diamond tooling in the USA. The following specifications are a guideline, each concrete slab is different and requires adjustments in the process, diamond tooling, machines and chemicals used.

Our process

The diamond polishing process on concrete floors is divided in three phases: **grinding, honing and polishing.**

Grinding – This operation levels the high spots on the slab, removing the top layer of cement (called “cream”) which in many cases contains sealants, paints, stains and other contaminants. This phase is very important because prepares the surface for honing and polishing. Eliminating the high/low spots insures that the diamond tooling is always in contact with the concrete surface. The grinding is performed with specifically designed planetary floor grinders with a minimum of three rotating heads. The heads are mounted on a rotating main plate. The rotation of the main plate in combination with the rotation of the single heads creates the correct motion necessary for properly grinding and polishing concrete. On each head are mounted diamond encrusted metallic buttons, called “**metal bond diamond buttons**”. Most grinding is performed with 30 grit buttons. The grinding is often a very slow process and can easily take hours even for small areas. The machine should be properly sized considering the project's square footage, accessibility and other details. The grinding marks are usually removed with 70 and 120 grit diamond buttons. The grinding process exposes the stone aggregate contained just below the surface, creating the classic look of polished concrete. During the grinding phase, occasional defects (such as air bubbles, buried debris and other objects) may be exposed as well.

Honing – This phase refines the surface to a very smooth but not yet reflective finish. It is usually done with transitional ceramic matrix diamond pads, with grit between 100 and 200. After this phase the surface can be diamond polished or directly sealed and burnished (honed finish)

Polishing – This phase is performed with resin matrix 400 and 800 grit diamond pads. Because of the higher compression strength, on our Diamond Polished Cement Toppings the polishing can be increased up to 1800 and 3500 grit (mirror reflectivity). During the polishing phase, additional operations such as coloring, densification and stenciling (art work) can be performed.

Burnishing – Once the surface is fully polished (or honed) a protective clear coat is applied (sealer) and burnished. The burnishing process generates heat triggering a transformation in the sealer, somehow like a glaze. As the manufacturer explains, the sealer creates “**a window of opportunity that allows cleaning of spills**”. Whenever additional protection is needed (like on industrial floors subject to chemical spills) the surface can be easily treated to become water and oil repellent, as well as acid resistant.

Color dyes – It is important to use color dyes that are especially manufactured for polished concrete. Only very finely milled pigments will penetrate the dense and smooth surface of honed and polished concrete. Acid stains are not recommended when diamond polishing. The acid will corrode the concrete creating a rougher, less reflective surface.

Stenciling – This is a highly specialized operation that allows creation of custom art work on the floor surface. The process starts by determining the different layers of color needed for a specific art work, then manufacturing a vinyl masking for each color layer. The vinyl stencils are temporarily applied to the surface as penetrating color dye is applied. Once the last layer is removed the full graphic is revealed.

Diamond tools – The quality of the diamond tools is extremely important for quality results. In addition, experience is needed to properly select the correct diamond tool for a specific concrete surface and phase.

Personnel – Grinding and polishing machines need to be operated by trained personnel only. Experience is a very important factor when looking for quality results.

Protection – During the construction operations preceding and following the polishing operations we recommend protecting a newly poured slab (after leaving the surface exposed for at least 4-5 days during the initial curing) with rosin paper or Ram board. Avoid using plastic sheeting, vapor barrier, rubber mats and other non-breathable materials for prolonged time since it might cause discoloration. On older slabs, preventive covering is not necessary but spilling of acid, solvents (e.g. purple primer for PVC welding, solvent based degreasers) and oils (motor oil, transmission oil...) and other penetrating substances (coffee...) must be avoided. When protecting the floor after the polishing is completed **avoid taping any masking directly to the floor**. The tape often cures into the finish and when removed may leave pronounced marks extremely hard if not impossible to repair.

Mock-ups – When pouring new concrete, it is recommended to construct mock ups for later use on color and finish preview. On existing older concrete, we recommend preparation of three swatches for proper color preview and selection.

Maintenance – Our polished floors are beautiful and very durable and can be cleaned and maintained much more easily than any other finish on concrete. Use of floor waxes on our diamond polished floors is not necessary and not recommended. See following Maintenance schedule page.

Refer to our website Maintenance page for more detailed instruction and information.

Technical tips for pouring diamond polished concrete slabs

Concrete mix specs – Use a minimum of 6 sacks Portland Cement per yard, whenever possible. Power-screed or hand-screed twice to ensure a very flat surface. Power-trowel or hard trowel the slab to make the densest, hardest possible surface. Do not exceed slump 5. Do not use admixtures other than retarder up to 1/%. Do not use fibers in the mix. 3/8" aggregate is recommended.

Fly ash - If possible avoid any Fly Ash in the concrete mix. Fly ash is a pozzolanic material recycled from industrial coal furnaces and used on concrete mixes to lower the amount of Portland cement, therefore making the mix more environmentally friendly (LEED points). Fly ash is often poorly mixed with the other components and tends to form clumps that are hidden below the surface, until the grinding operation exposes them. That will result in blotchiness and uneven coloration through the slab. Even when properly blended, fly ash often lowers the glossiness of the finished floor and can cause discoloration.

Control joints – To minimize cracking saw cut control joints as per architectural specifications and to a 6'x8' maximum interval. Tooled control joints are not recommended. Joints can be backfilled during the grinding/honing phase with elastomeric polyurea joint filler (recommended) or after the burnishing with polyurethane caulking.

Specs for pouring Diamond Polished concrete slabs

Concrete Mix Design And Finishing Crew	Properly plan the mix design and the installation procedures. Size the crew and each pour sq. ft. so that enough time is allowed for properly finishing the concrete.
Reinforcement	Use 4"x4" mesh gauge #4 welded wire sheets on topping slabs and radiant heat pipes.
Hydronic heat systems	Allow at least 1-1/2" concrete cover over piping
Fly ash	Do not use fly ash in the mix, if possible. Fly ash may cause blotchiness and uneven sheen. Most ready-mix supplier use 20% fly ash in the mix. MUST SPECIFY "NO FLY ASH" WHEN ORDERING.
Slump	Do not exceed slump 5; do not add water to increase workability, 1% retarder is ok.
Portland cement	Use 6 sacks per yard minimum. Adjust color pigment as needed.
Integral pigments	Davis Colors and Ameripolish OS are recommended – do not use color hardener.
Finishing	Hard trowel to a flat, smooth and dense surface. Power trowel whenever possible
Curing	Use acrylic curing agents such as Davis W1000, single application right after placement. We do not recommend curing blankets or other curing methods
Protection	Protect newly poured slabs and after completion of polishing operation with rosin paper or Ram board – DO NOT TAPE MASKING DIRECTLY TO THE POLISHED FLOOR – do not use plastic sheeting and rubber mats for prolonged time.
Control Joints	Saw cut joints as per architect specifications or at a 6'x8' maximum interval. Joints can be backfilled with colored polyurea joint filler or colored sanded caulking.

Recommended maintenance schedule for diamond polished surfaces

General rules and tips

- Use a microfiber mop or auto scrubber with soft nylon pads for cleaning.
- Blot up spills or water immediately with a clean cloth, sponge or paper towel.
- Do not allow excess liquid to remain on the surface.
- Do not use acidic or alkaline products on your floor.
- Do not use steel wool or other scouring or abrasive pads that may scratch or remove the protective treatment.
- When using auto scrubbers, always use soft nylon pads for cleaning.
- Do not apply floor wax.

Residential

Daily or as needed	Dry mop with white microfiber pad for dust removal
Weekly or as needed	Wet mop with blue microfiber pad and water or Prosoco Daily Klean for deep cleaning and dirt removal
Monthly	Application of Prosoco LS Klean Ultra with blue microfiber pad
Every 6 months	Revitalize with Ameripolish Stain protector, burnish with high speed floor machine equipped with diamond encrusted buffing pads

Light Commercial

Daily or as needed	Dry mop with soft microfiber pad or auto scrubber for dust, debris and grit removal
Weekly or as needed	Wet mop with blue microfiber pad or auto scrubber and water or Prosoco Daily Klean for deep cleaning and dirt removal
Bi-weekly or monthly	Application of Prosoco LS Klean Ultra with blue microfiber pad, buff with high speed burnisher
Every 6 months	Revitalize with Ameripolish Stain protector, burnish with high speed floor machine equipped with diamond encrusted buffing pads

High-traffic Commercial - Industrial

Daily or as needed	Dry mop with soft microfiber pad for dust, debris and grit removal
Daily or as needed	Auto scrub with Prosoco Daily Klean
Weekly or every two weeks	Auto scrub with Prosoco LS Klean Ultra with blue microfiber pad, buff with high speed burnisher
Monthly	Revitalize with Ameripolish Stain protector, burnish with high speed floor machine equipped with diamond encrusted buffing pads